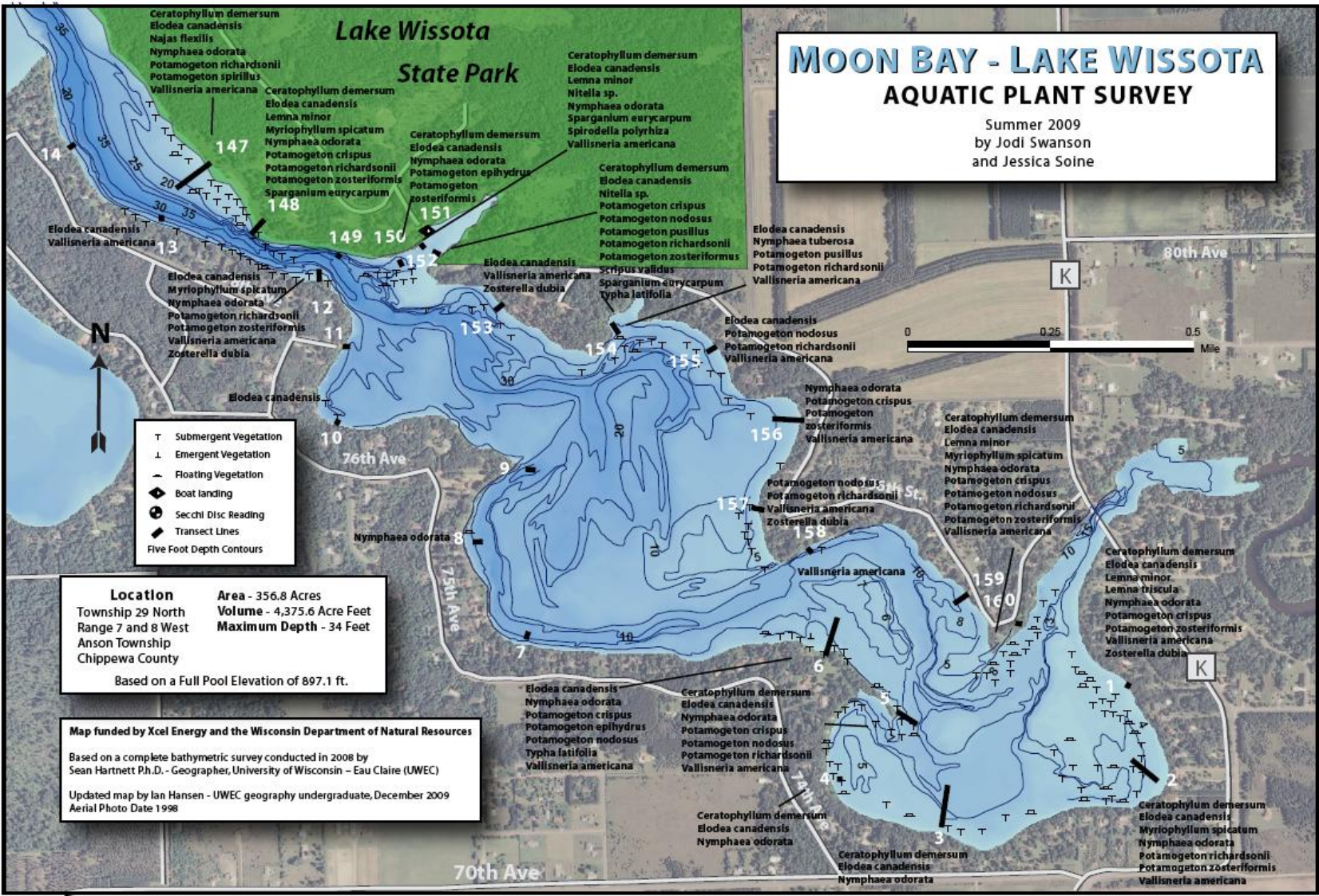


MOON BAY - LAKE WISSOTA AQUATIC PLANT SURVEY

Summer 2009
by Jodi Swanson
and Jessica Soine



MOON BAY - LAKE WISSOTA

TRANSECT LINES AND DEPTH ZONES

Summer 2009
by Jodi Swanson
and Jessica Soine

Depth Zone Size	
DEPTH (FT)	ACRES
0-1	7.0
1-2	8.0
2-3	8.2
3-4	8.4
4-5	32.7
5-6	12.1
6-7	12.2
7-8	12.9
8-9	28.3
9-10	14.3



Location
Township 29 North
Range 7 and 8 West
Anson Township
Chippewa County

Area - 356.8 Acres
Volume - 4,375.6 Acre Feet
Maximum Depth - 34 Feet

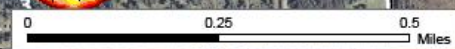
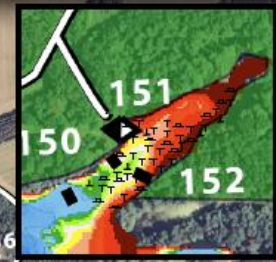
Based on a Full Pool Elevation of 897.1 ft.

Map funded by Xcel Energy and the Wisconsin Department of Natural Resources

Based on a complete bathymetric survey conducted in 2008 by Sean Hartnett Ph.D. - Geographer, University of Wisconsin - Eau Claire (UWEC)

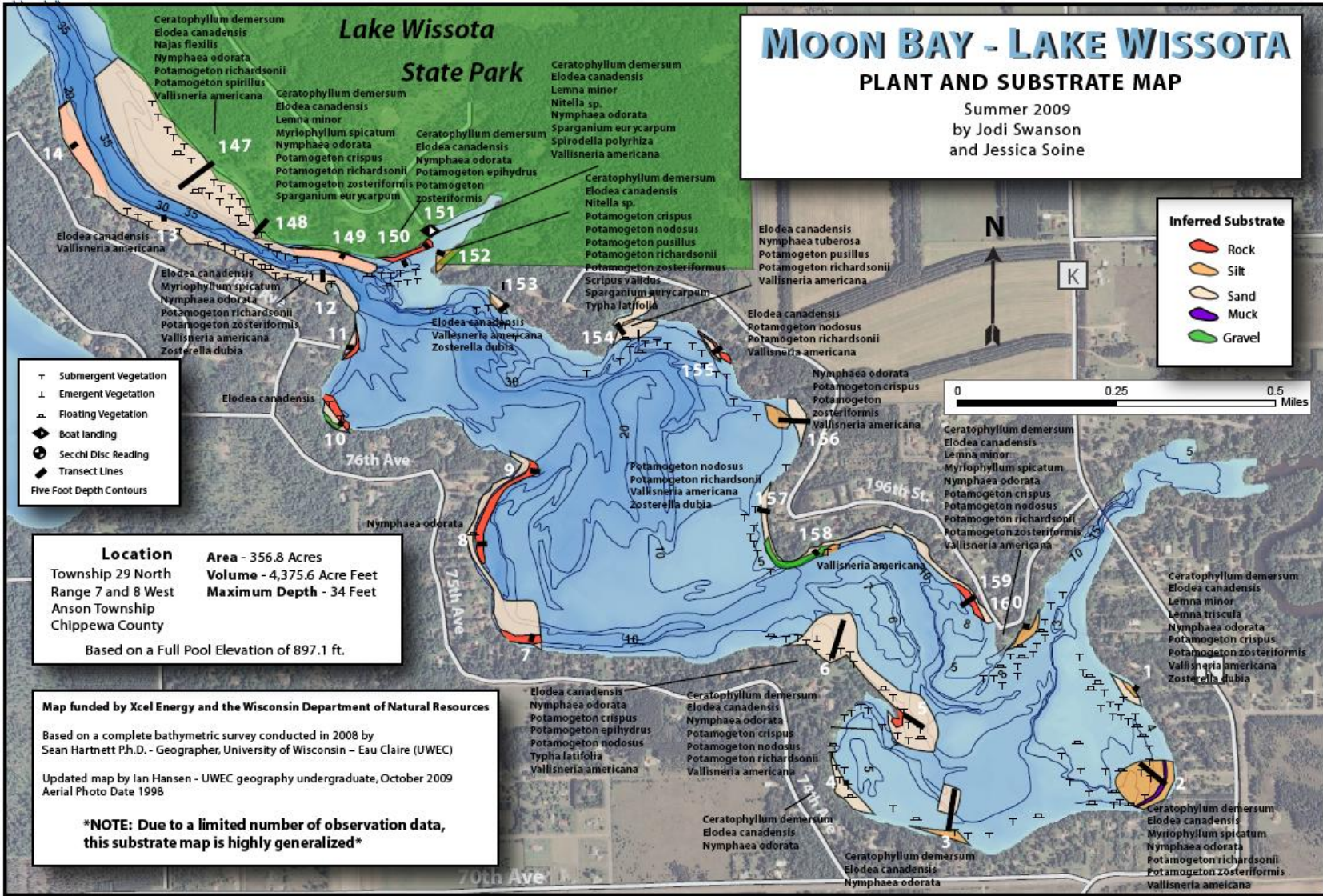
Updated map by Ian Hansen - UWEC geography undergraduate, December 2009
Aerial Photo Date 1998

- T Submergent Vegetation
- ⊥ Emergent Vegetation
- ⌒ Floating Vegetation
- ◆ Boat landing
- ⊙ Secchi Disc Reading
- ▬ Transect Lines
- Four Foot Depth Contours



MOON BAY - LAKE WISSOTA PLANT AND SUBSTRATE MAP

Summer 2009
by Jodi Swanson
and Jessica Soine



- ⊕ Submergent Vegetation
- ⊥ Emergent Vegetation
- △ Floating Vegetation
- ◆ Boat landing
- ⊙ Secchi Disc Reading
- ◆ Transect Lines
- Five Foot Depth Contours

- Inferred Substrate**
- Rock
 - Silt
 - Sand
 - Muck
 - Gravel

Location
Township 29 North
Range 7 and 8 West
Anson Township
Chippewa County

Area - 356.8 Acres
Volume - 4,375.6 Acre Feet
Maximum Depth - 34 Feet

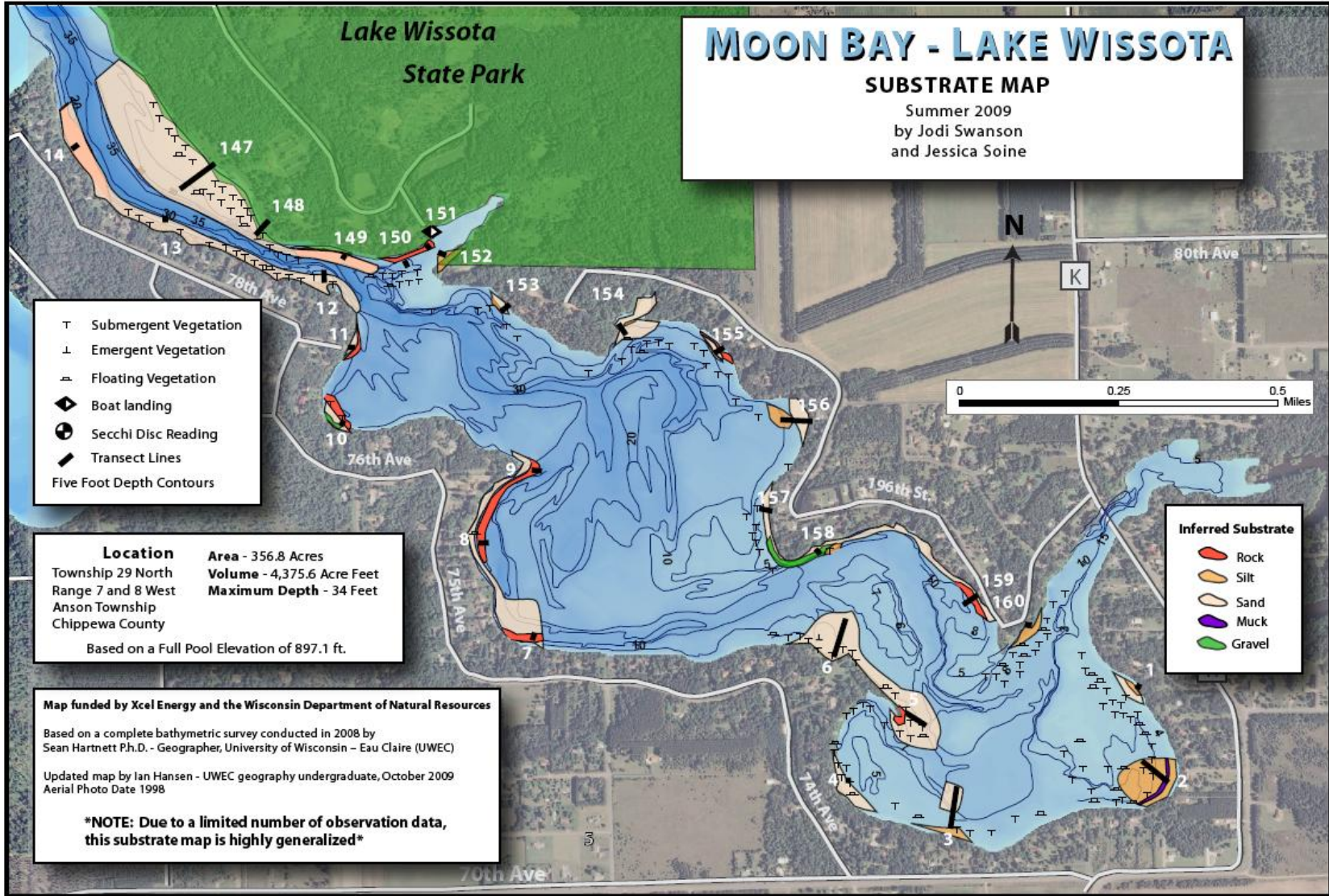
Based on a Full Pool Elevation of 897.1 ft.

Map funded by Xcel Energy and the Wisconsin Department of Natural Resources

Based on a complete bathymetric survey conducted in 2008 by Sean Hartnett Ph.D. - Geographer, University of Wisconsin - Eau Claire (UWEC)

Updated map by Ian Hansen - UWEC geography undergraduate, October 2009
Aerial Photo Date 1998

NOTE: Due to a limited number of observation data, this substrate map is highly generalized



MOON BAY - LAKE WISSOTA

SUBSTRATE MAP

Summer 2009
by Jodi Swanson
and Jessica Soine

- T Submergent Vegetation
- ⊥ Emergent Vegetation
- ▲ Floating Vegetation
- ◆ Boat landing
- ⊙ Secchi Disc Reading
- Transect Lines
- Five Foot Depth Contours

Location
Township 29 North
Range 7 and 8 West
Anson Township
Chippewa County

Area - 356.8 Acres
Volume - 4,375.6 Acre Feet
Maximum Depth - 34 Feet

Based on a Full Pool Elevation of 897.1 ft.

Map funded by Xcel Energy and the Wisconsin Department of Natural Resources

Based on a complete bathymetric survey conducted in 2008 by Sean Hartnett Ph.D. - Geographer, University of Wisconsin - Eau Claire (UWEC)

Updated map by Ian Hansen - UWEC geography undergraduate, October 2009
Aerial Photo Date 1998

NOTE: Due to a limited number of observation data, this substrate map is highly generalized

- Inferred Substrate**
- Rock
 - Silt
 - Sand
 - Muck
 - Gravel