

# LAKE WISSOTA - NORTHERN SHORELINE AQUATIC PLANT SURVEY

Summer 2009  
by Jodi Swanson  
and Jessica Soine

*Ceratophyllum demersum*  
*Elodea canadensis*  
*Najas flexis*  
*Nymphaea odorata*  
*Potamogeton nodosus*  
*Vallisneria americana*  
*Zosterella dubia*

*Ceratophyllum demersum*  
*Elodea canadensis*  
*Nymphaea odorata*  
*Potamogeton nodosus*  
*Potamogeton pusillus*  
*Potamogeton spirillus*  
*Potamogeton richardsonii*  
*Vallisneria americana*

*Zosterella dubia*  
*Potamogeton pusillus*  
*Zosterella dubia*

*Carex* sp.  
*Ceratophyllum demersum*  
*Elodea canadensis*  
*Myriophyllum spicatum*  
*Najas flexis*  
*Nymphaea odorata*  
*Potamogeton nodosus*  
*Potamogeton richardsonii*  
*Sagittaria latifolia*  
*Sparganium eurycarpum*  
*Vallisneria americana*

*Elodea canadensis*  
*Potamogeton pusillus*  
*Vallisneria americana*

*Elodea canadensis*  
*Potamogeton nodosus*  
*Potamogeton pusillus*  
*Potamogeton spirillus*  
*Vallisneria americana*  
*Zosterella dubia*

*Vallisneria americana*

Lake Wissota  
State Park

*Elodea canadensis*  
*Nymphaea odorata*  
*Potamogeton crispus*  
*Potamogeton nodosus*  
*Potamogeton richardsonii*  
*Vallisneria americana*  
*Zosterella dubia*

*Elodea canadensis*

*Elodea canadensis*  
*Myriophyllum spicatum*  
*Potamogeton crispus*  
*Potamogeton richardsonii*  
*Vallisneria americana*  
*Zosterella dubia*

*Ceratophyllum demersum*  
*Elodea canadensis*  
*Najas flexis*  
*Nitella* sp.  
*Nymphaea odorata*  
*Potamogeton pusillus*

*Ceratophyllum demersum*  
*Elodea canadensis*  
*Najas flexis*  
*Nymphaea odorata*  
*Potamogeton pusillus*  
*Potamogeton richardsonii*  
*Vallisneria americana*

Map funded by Xcel Energy and the Wisconsin DNR

Based on a complete bathymetric survey  
conducted in 2008 by Sean Hartnett Ph.D.  
Geographer, University of Wisconsin - Eau Claire (UWEC)

Updated map by Ian Hansen - UWEC geography undergraduate  
December 2009  
Aerial Photo Date 1998

- T Submergent Vegetation
- ⊥ Emergent Vegetation
- △ Floating Vegetation
- Transect Lines
- Five Foot Depth Contours

# LAKE WISSOTA - NORTHERN SHORELINE TRANSECT LINES AND DEPTH ZONES

Summer 2009  
by Jodi Swanson  
and Jessica Soine

## Lake Wissota Main Body Depth Zone Size

DEPTH (FT)	ACRES
0-1	13.0
1-2	17.8
2-3	17.9
3-4	18.1
4-5	18.4
5-6	63.0
6-7	25.8
7-8	28.8
8-9	27.7
9-10	29.2

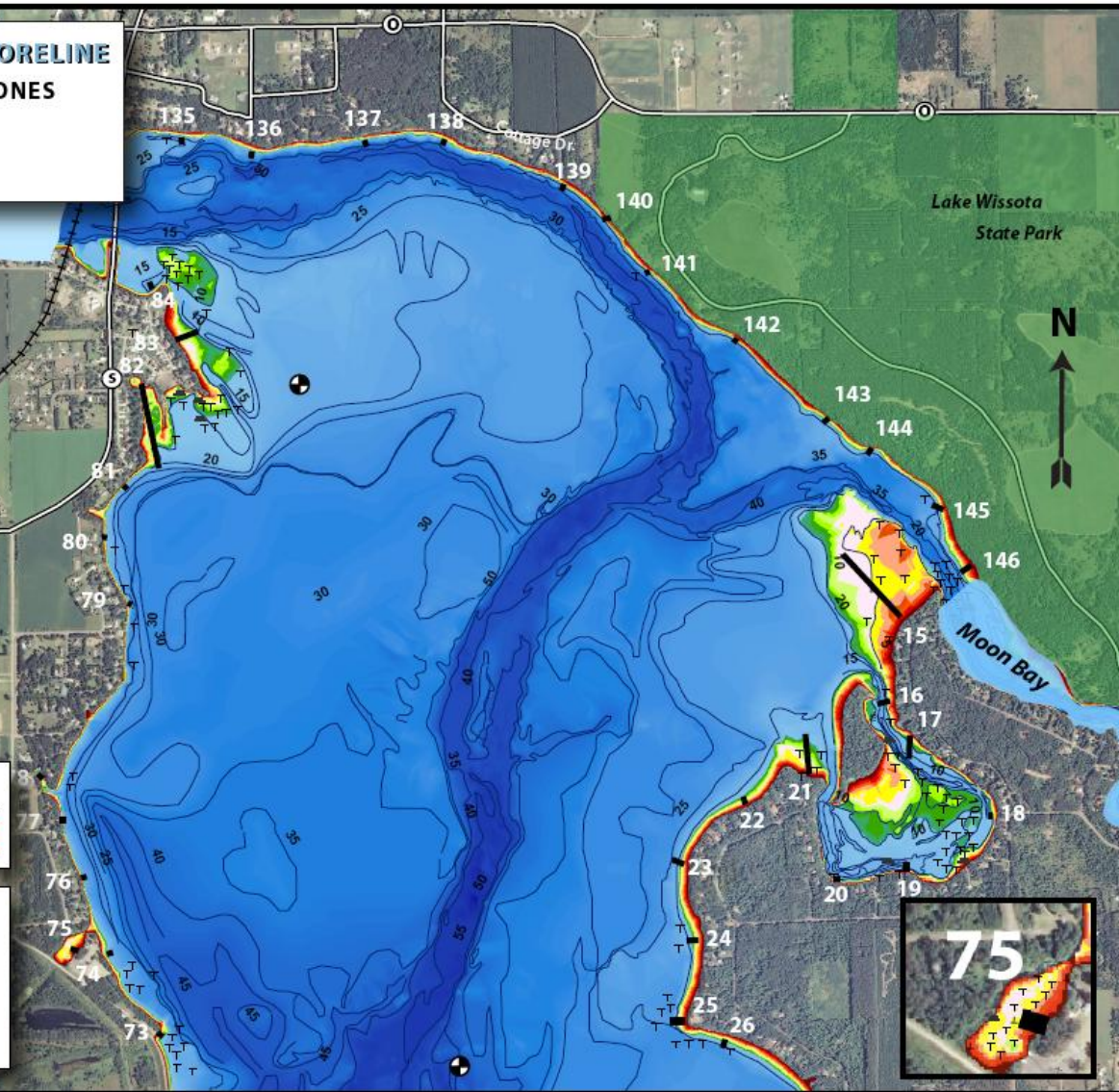
- T Submergent Vegetation
- ⊥ Emergent Vegetation
- ▲ Floating Vegetation
- ◆ Boat landing
- ⊙ Secchi Disc Reading
- 70 / \ Transect Lines
- Five Foot Depth Contours



Map funded by Xcel Energy and the Wisconsin DNR

Based on a complete bathymetric survey  
conducted in 2008 by Sean Hartnett Ph.D.  
Geographer, University of Wisconsin - Eau Claire (UWEC)

Updated map by Ian Hansen - UWEC geography undergraduate  
Dec 2009  
Aerial Photo Date 1998



# LAKE WISSOTA - NORTHERN SHORELINE

## PLANT AND SUBSTRATE MAP

Summer 2009  
by Jodi Swanson  
and Jessica Solne

Map funded by Xcel Energy and the Wisconsin DNR

Based on a complete bathymetric survey  
conducted in 2008 by Sean Hartnett P.h.D.  
Geographer, University of Wisconsin - Eau Claire (UWEC)

Updated map by Ian Hansen - UWEC geography undergraduate  
October 2009  
Aerial Photo Date 1998

**\*NOTE: Do to a limited number of observation data,  
this substrate map is highly generalized\***

*Ceratophyllum demersum*  
*Elodea canadensis*  
*Najas flexis*  
*Nymphaea odorata*  
*Potamogeton nodosus*  
*Vallisneria americana*  
*Zosterella dubia*

176

### Inferred Substrate

- Rock
- Silt
- Sand
- Muck
- Gravel

- Submergent Vegetation
- Emergent Vegetation
- Floating Vegetation
- Boat landing
- Secchi Disc Reading
- Transect Lines
- Five Foot Depth Contours



*Ceratophyllum demersum*  
*Elodea canadensis*  
*Nymphaea odorata*  
*Potamogeton nodosus*  
*Potamogeton pusillus*  
*Potamogeton richardsonii*  
*Potamogeton spirillus*  
*Vallisneria americana*

*Zosterella dubia*

*Potamogeton pusillus*  
*Zosterella dubia*

*Vallisneria americana*  
*Zosterella dubia*

*Carex sp.*  
*Ceratophyllum demersum*  
*Elodea canadensis*  
*Myriophyllum spicatum*  
*Najas flexis*  
*Nymphaea odorata*  
*Potamogeton nodosus*  
*Potamogeton richardsonii*  
*Sagittaria latifolia*  
*Sparganium eurycarpum*  
*Vallisneria americana*

*Elodea canadensis*  
*Potamogeton pusillus*  
*Vallisneria americana*

*Elodea canadensis*  
*Potamogeton nodosus*  
*Potamogeton pusillus*  
*Potamogeton spirillus*  
*Vallisneria americana*  
*Zosterella dubia*

*Elodea canadensis*

135 136 137 138

139 140

*Vallisneria americana*

141 142

*Elodea canadensis*  
*Nymphaea odorata*  
*Potamogeton crispus*  
*Potamogeton nodosus*  
*Potamogeton richardsonii*  
*Vallisneria americana*  
*Zosterella dubia*

*Elodea canadensis*

143 144

145 146

*Elodea canadensis*  
*Myriophyllum spicatum*  
*Potamogeton crispus*  
*Potamogeton richardsonii*  
*Vallisneria americana*  
*Zosterella dubia*

*Vallisneria canadensis*  
*Zosterella dubia*

*Ceratophyllum demersum*  
*Elodea canadensis*  
*Najas flexis*  
*Nitella sp.*  
*Nymphaea odorata*  
*Potamogeton pusillus*

*Elodea canadensis*  
*Potamogeton richardsonii*  
*Vallisneria americana*  
*Zosterella dubia*

*Elodea canadensis*

15 16 17

18 19 20

21 22 23

24 25 26

*Elodea canadensis*  
*Potamogeton nodosus*  
*Vallisneria americana*  
*Zosterella dubia*

*Ceratophyllum demersum*  
*Elodea canadensis*  
*Najas flexis*  
*Nymphaea odorata*  
*Potamogeton pusillus*  
*Potamogeton richardsonii*  
*Vallisneria americana*

# LAKE WISSOTA - NORTHERN SHORELINE SUBSTRATE MAP

Summer 2009  
by Jodi Swanson  
and Jessica Soine






Map funded by Xcel Energy and the Wisconsin DNR

Based on a complete bathymetric survey  
conducted in 2008 by Sean Hartnett P.h.D.  
Geographer, University of Wisconsin - Eau Claire (UWEC)

Updated map by Ian Hansen - UWEC geography undergraduate  
October 2009  
Aerial Photo Date 1998

**\*NOTE: Do to a limited number of observation data,  
this substrate map is highly generalized\***

**Inferred Substrate**

-  Rock
-  Silt
-  Sand
-  Muck
-  Gravel

T Submergent Vegetation  
L Emergent Vegetation  
▲ Floating Vegetation  
◆ Boat landing  
● Secchi Disc Reading  
/ Transect Lines  
Five Foot Depth Contours

